

MONITORING WATER BODIES TO DETERMINE THEIR CONNECTIVITY, SEASONAL VARIATIONS AND PERMANENCE IN THE GRIJALVA-USUMACINTA REGION.

Alejandra A. López-Caloca^a, Felipe Omar Tapia-Silva^b and Guadalupe Rivera^a

a) Centro de Investigación en Geografía y Geomática "Ing. Jorge L. Tamayo" A.C. (Centrogeo), México D.F.

b) Universidad Autónoma Metropolitana (UAM), Lab. Geomática Aplicada a Recursos Naturales, Dep. de Hidrobiología, México D.F.

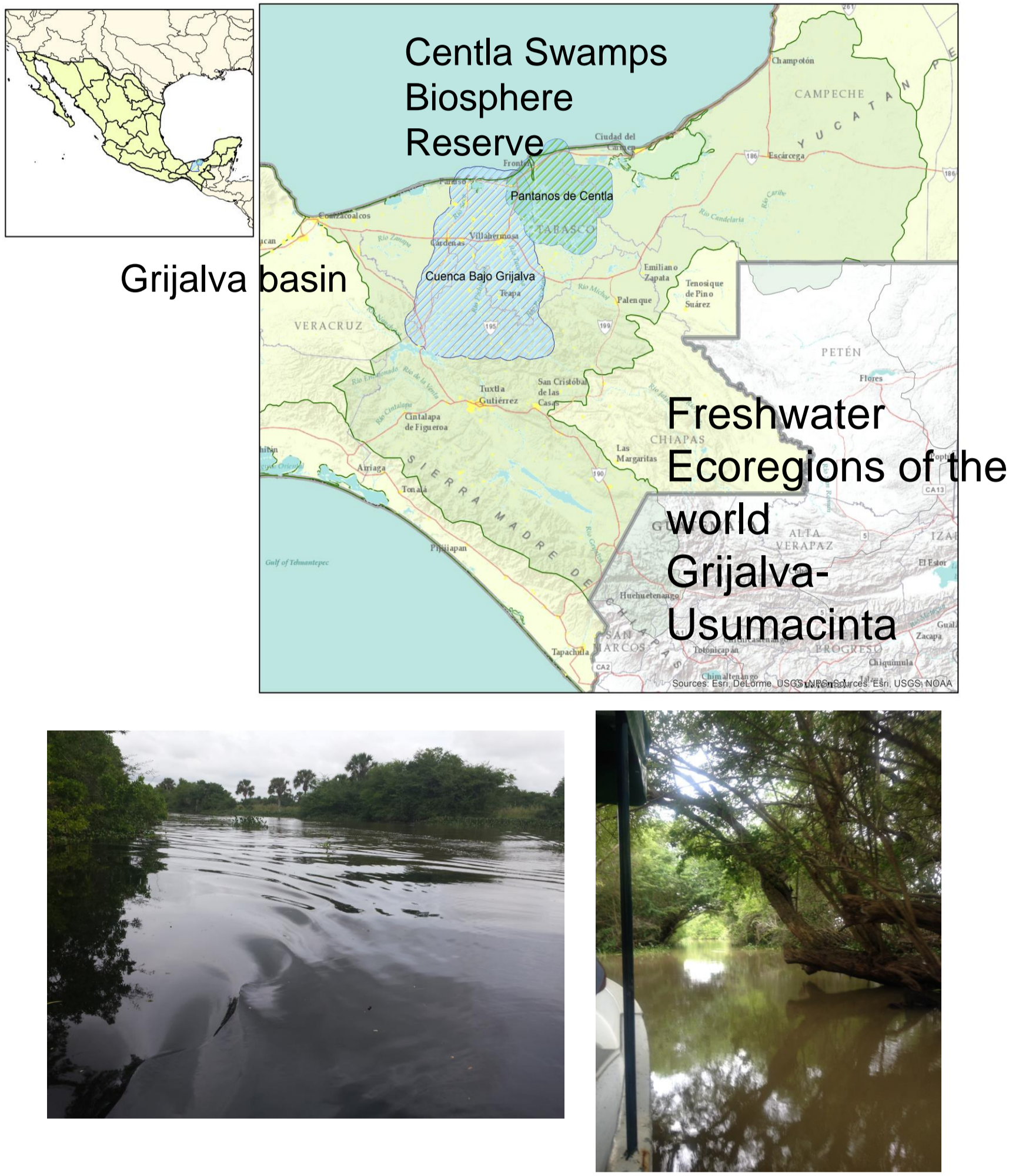
Motivation & Objectives

The objective of this work is to develop a monitoring procedure of continental waters of the Grijalva-Usumacinta eco-hydrological region, based on the identification and extraction of information on water surfaces in this study area, using series of images taken periodically by the Sentinel-1A.

In order to understand the spatial-temporal aspects during an annual period, two sub-ecosystems are considered, located in the lowland of this eco-hydrological region; the first is the Grijalva basin and the second is the Centla Swamps Biosphere Reserve (*Reserva de la Biósfera Pantanos de Centla*).

Study Area

The levels of the Grijalva and Usumacinta rivers and lakes in the state of Tabasco, in the southeastern region of the Mexico, must be continuously monitored when they reach a critical capacity.

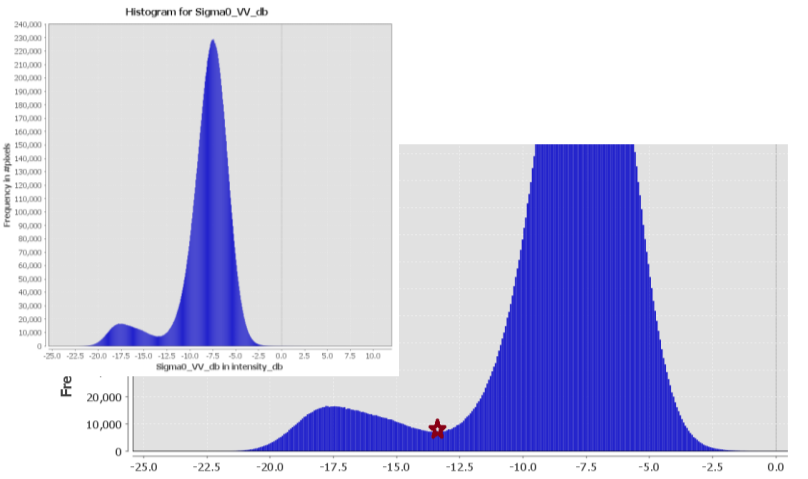


Methodology

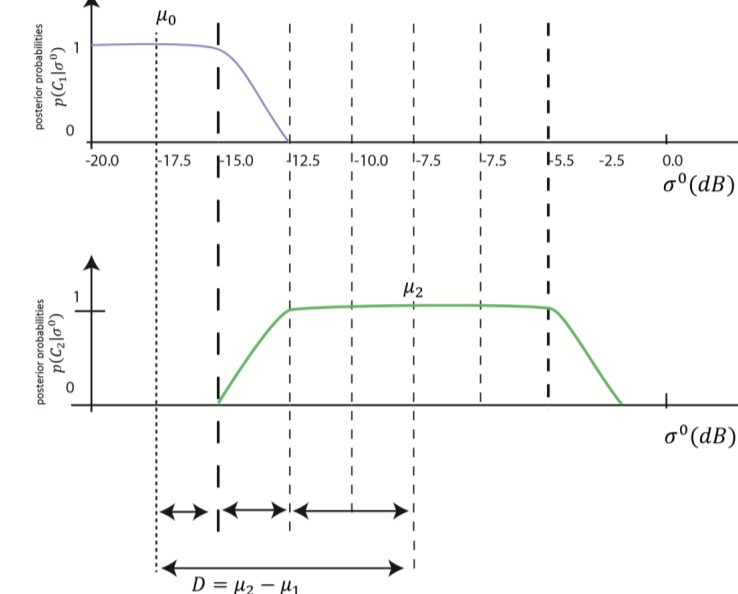
Calibration radiometrically corrects a SAR image so that the pixel values truly represent the radar backscatter of the reflecting surface. Multiple looks may be generated by averaging over range and/or azimuth resolution cells improving radiometric resolution but degrading spatial resolution. Speckle filters can be applied to the data to reduce the amount of blurred features or reduced resolution. Geocoding converts an image from Slant Range or Ground Range Geometry into a Map Coordinate System. Terrain Geocoding involves using a Digital Elevation Model (DEM) to correct for inherent SAR geometry effects such as foreshortening, layover and shadow. Sentinel 1A data were pre-processed using ESA's SNAP (Sentinel Application Platform) software.

Image Processing Binary Segmentation

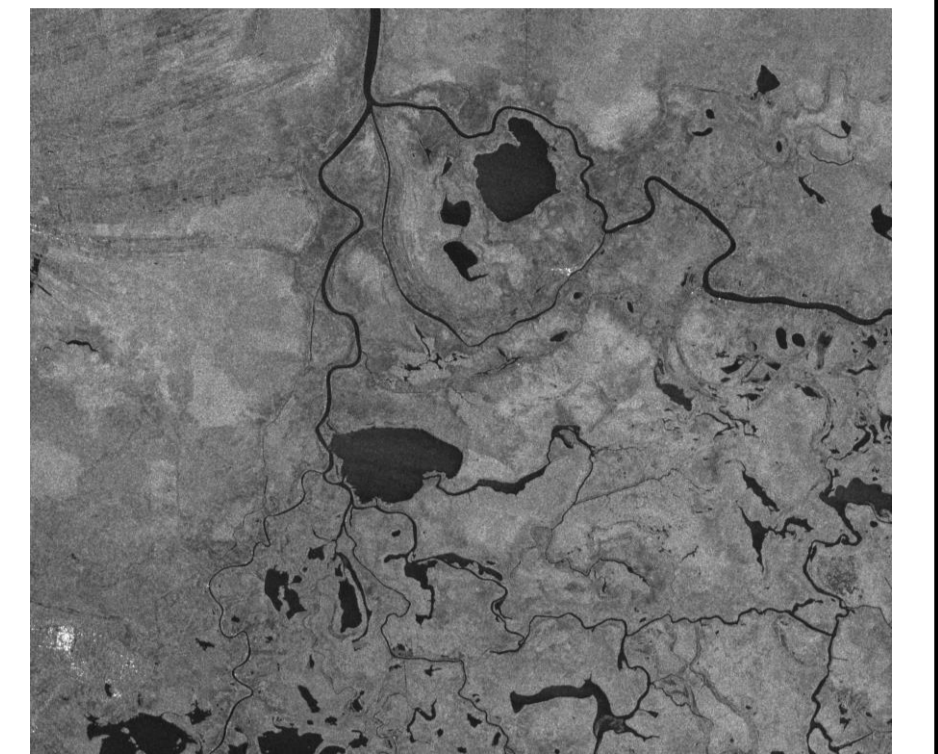
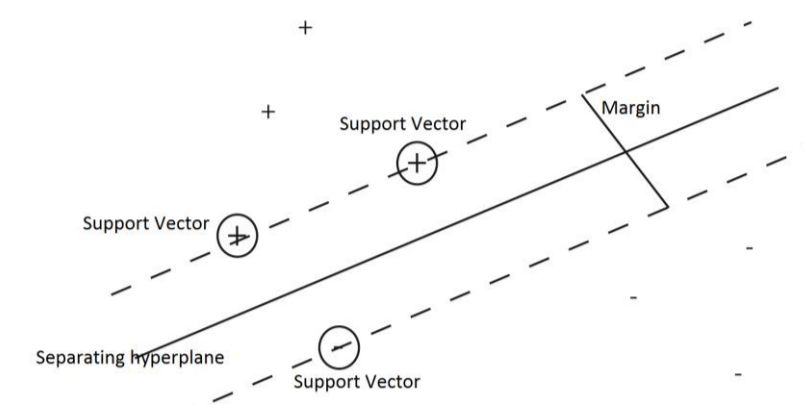
Thresholding method



Bayesian method

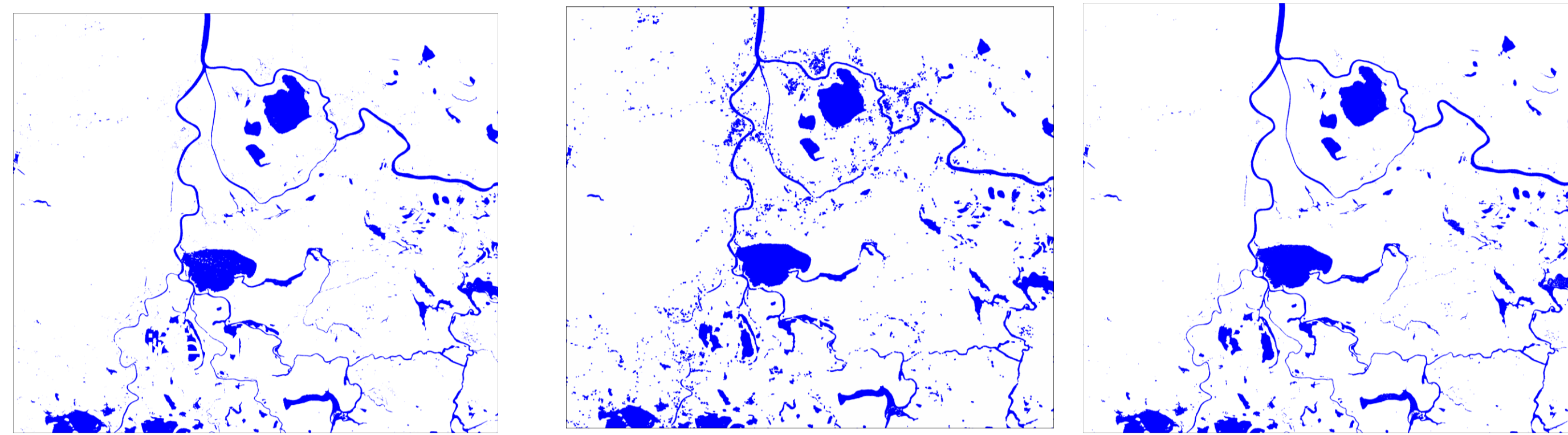


Support Vector Machine method



Sentinel 1A C-band Synthetic Aperture Radar Level-1 Ground Range Detected

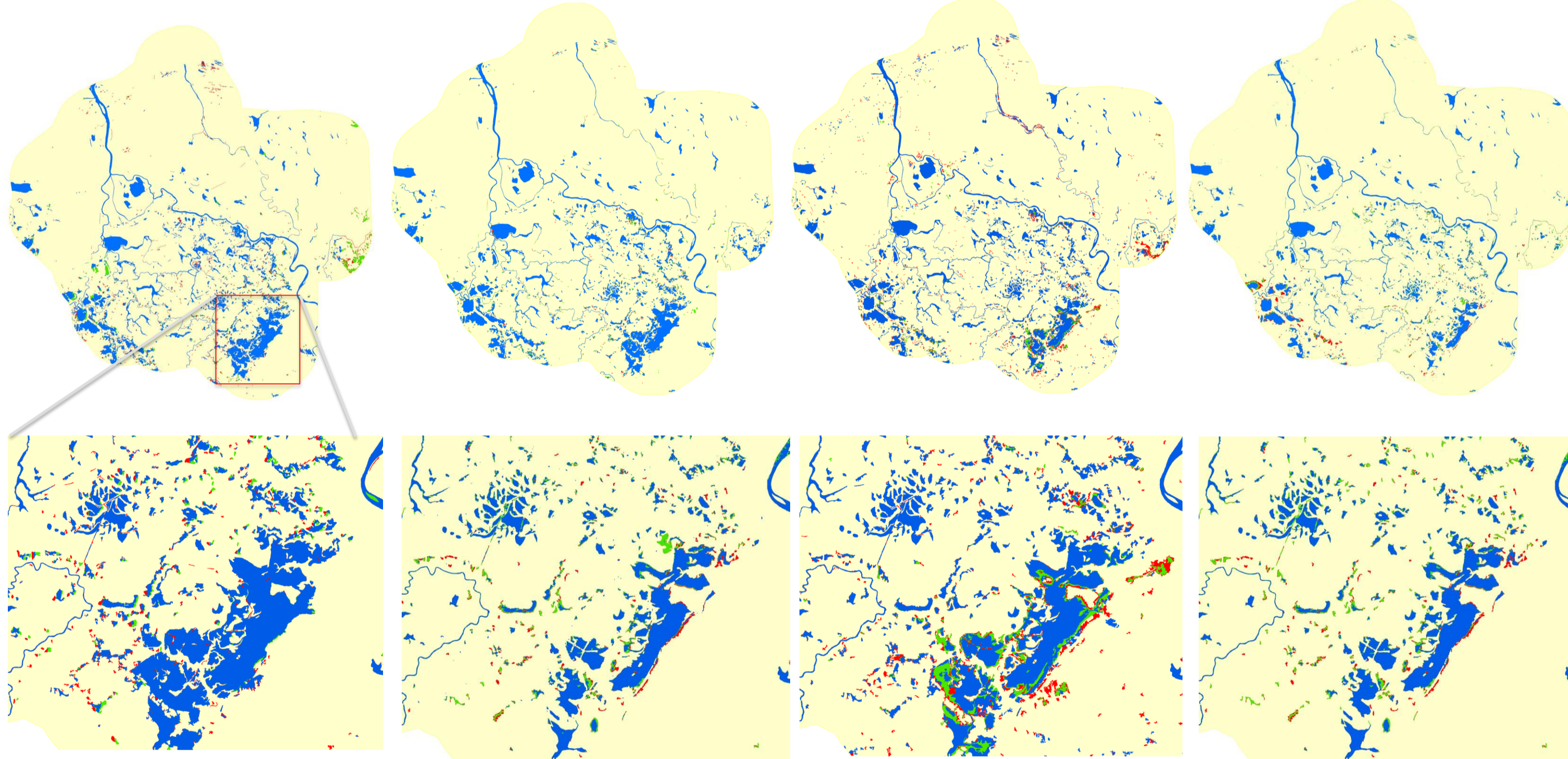
Backscatter ThresholdingSigma0_db<=-13.44



In the confusion matrices, SVM method presented the higher value of identification pixels with Water Surface Area.

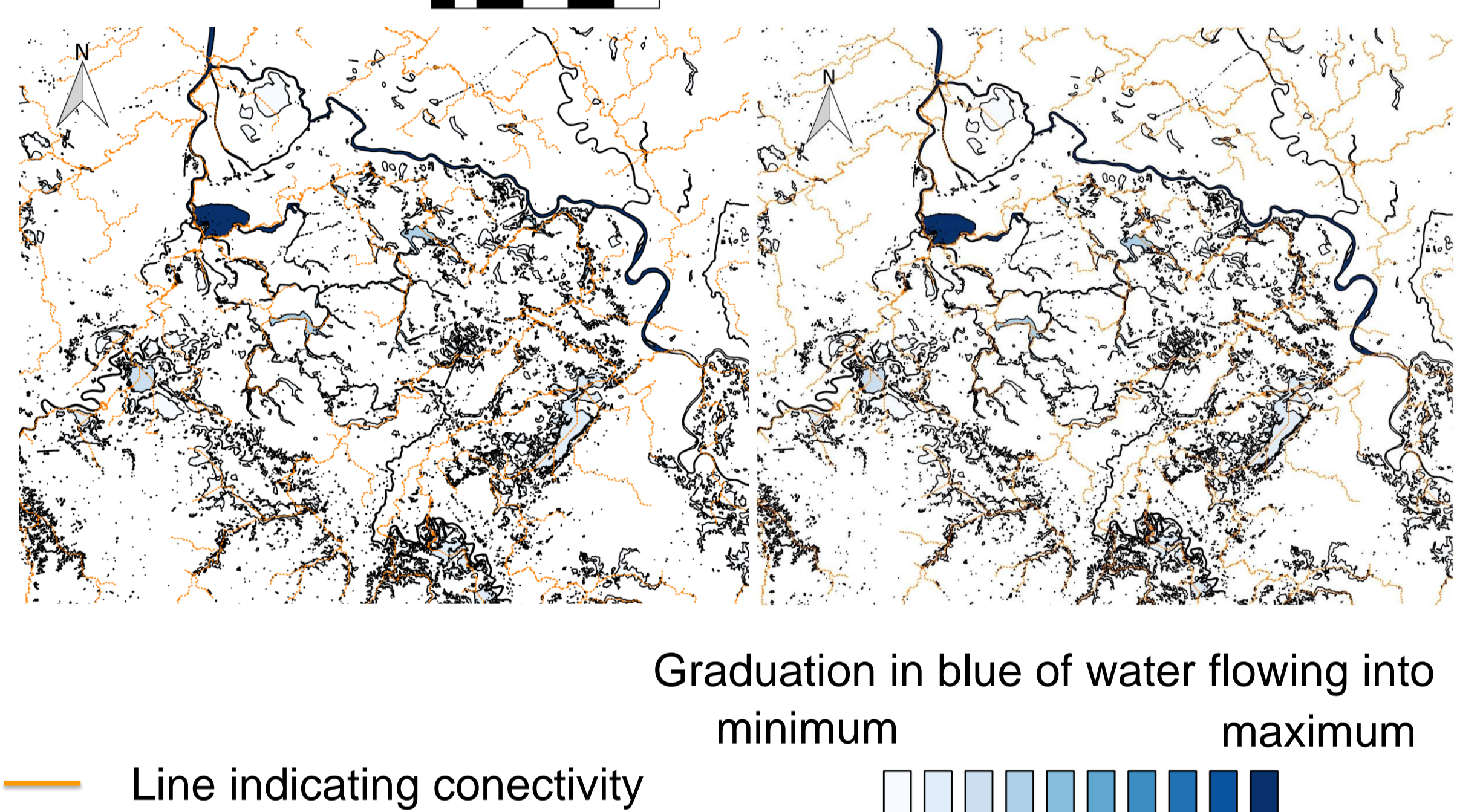
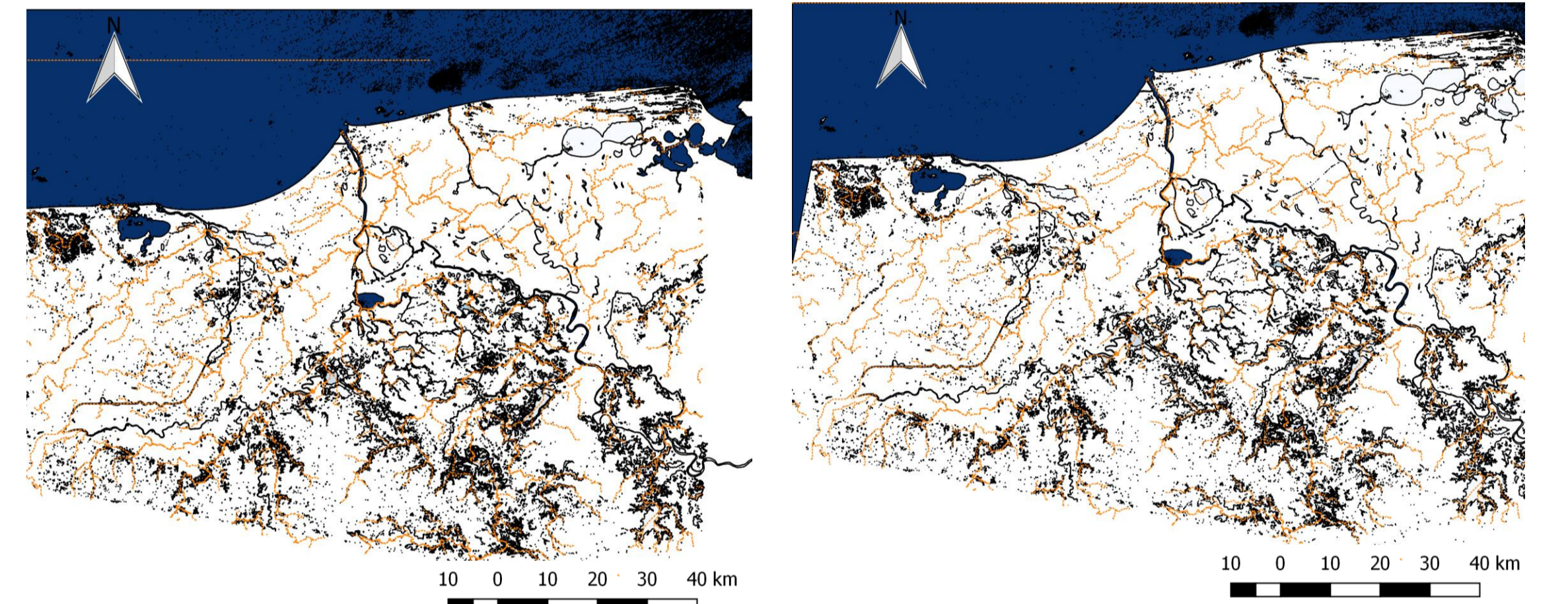
Seasonal results

During draining period During low water period During filling period During high water period

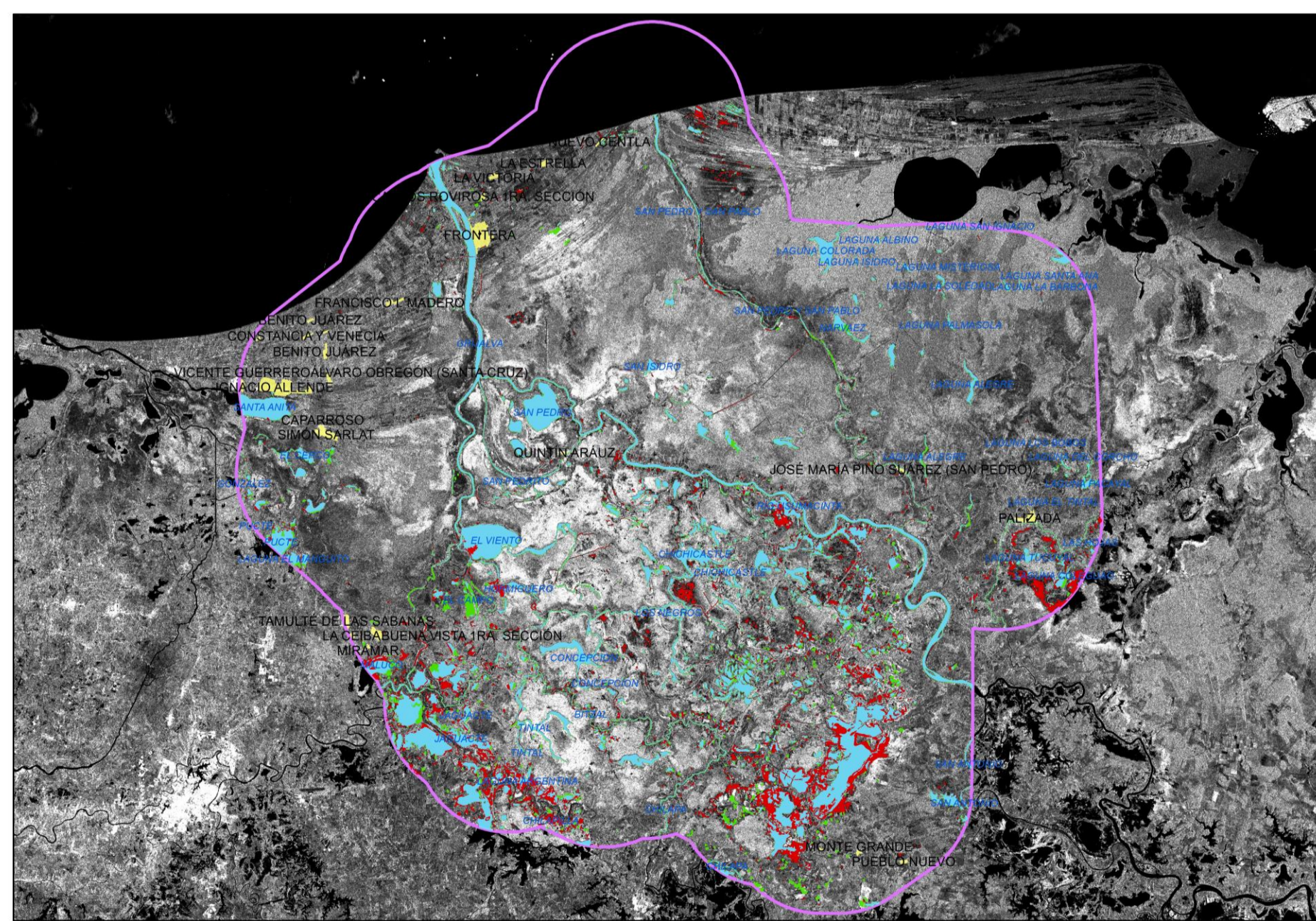
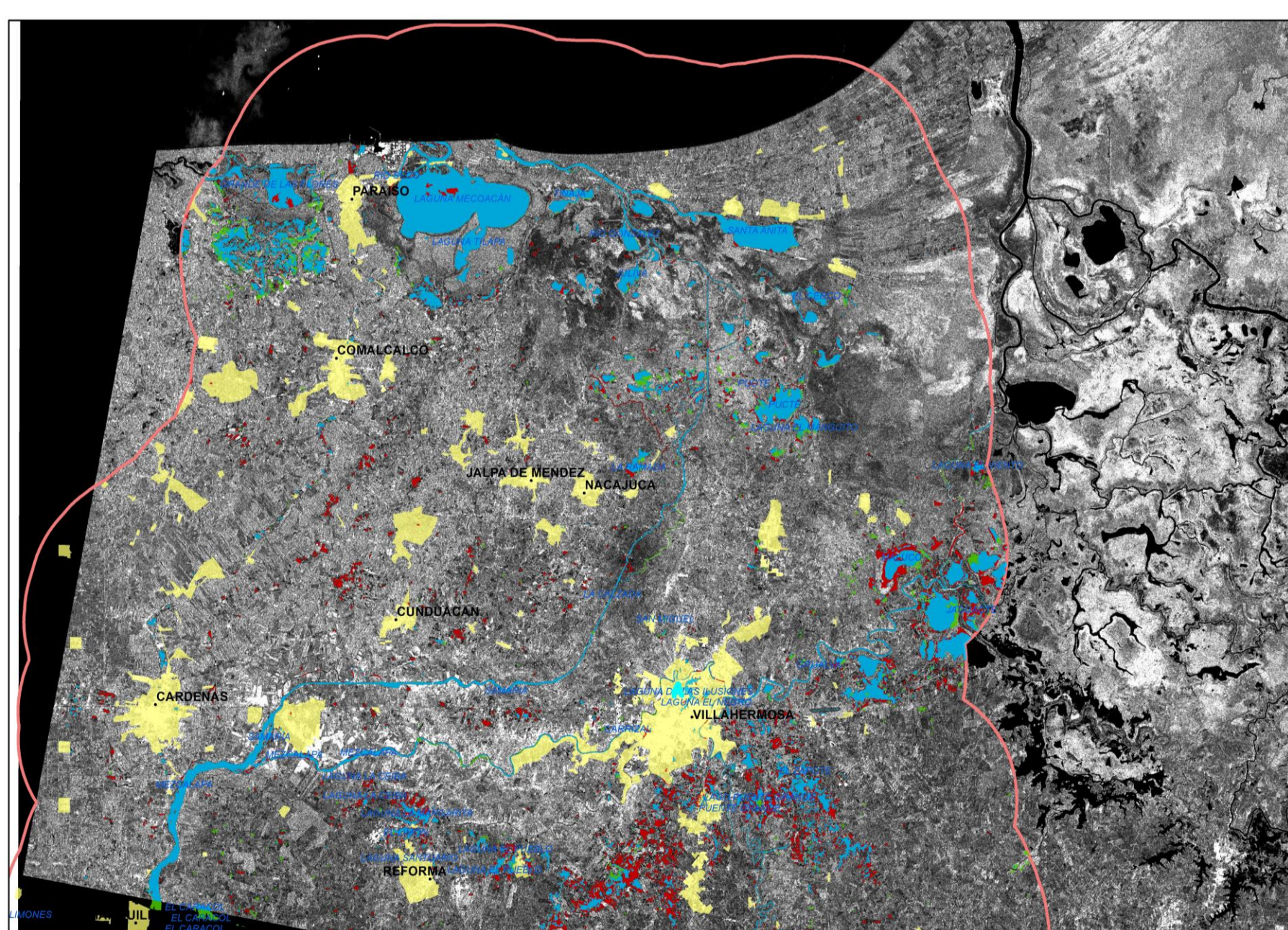


Preliminary hydrologic results

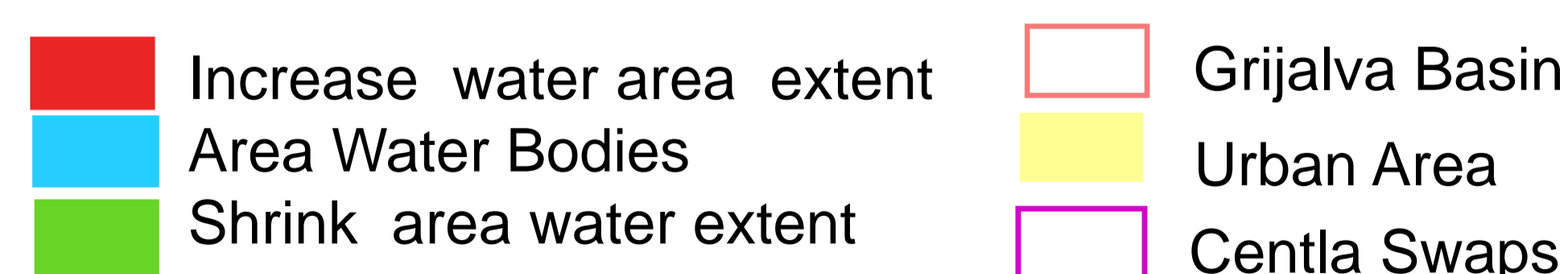
Water bodies defined for 2014 Water bodies defined for 2015



Mapping water bodies bi-temporal change detection

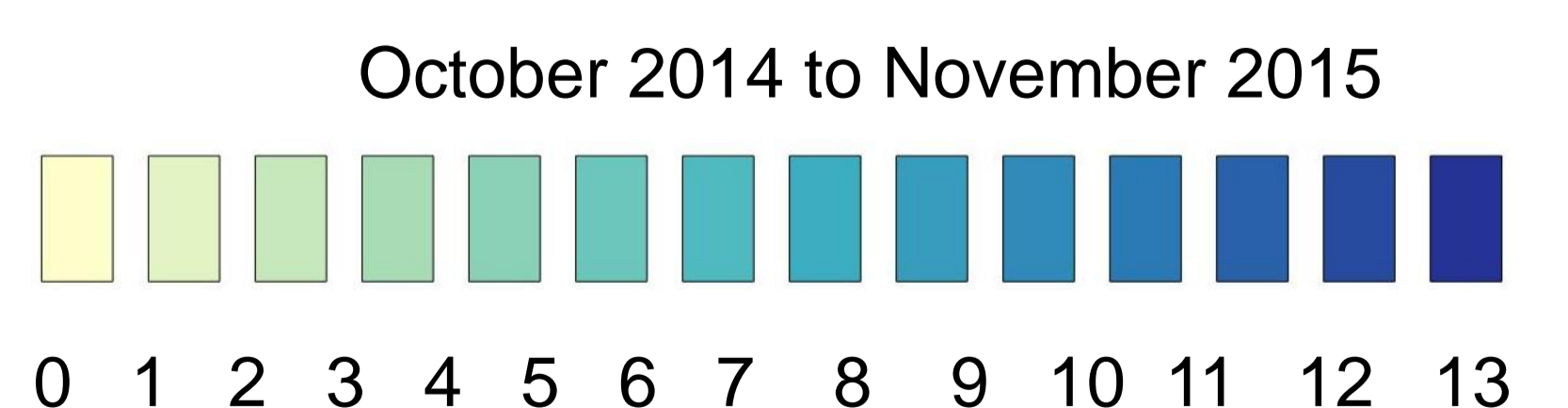
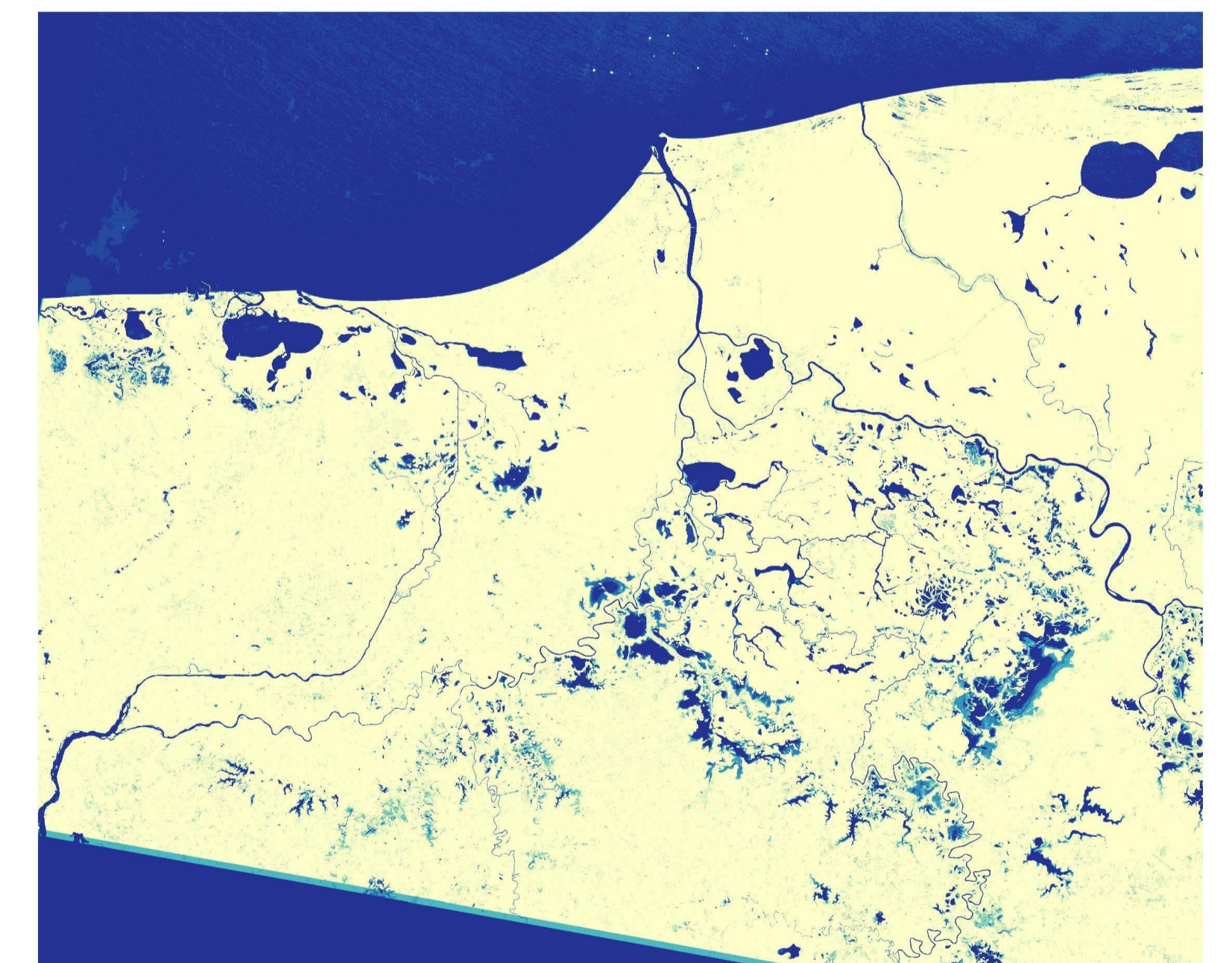


October 2014 and October 2015



| Zone | Tabla1. Body Water Area (km ²) | | |
|--------------------|--|---------------------|------------|
| | Area (october 2014) | Area (october 2015) | Difference |
| Centla Wetland | 508.2 | 393.8 | 114.4 |
| Low Grijalva Basin | 369.5 | 311.9 | 57.6 |

Number of months with flooding per pixel



Conclusion

*The study shows the spatial-temporal behavior of form, size, distribution of water bodies that allows for the description of rivers, connectivity and drainage patterns.

*The year 2014 was a year with a greater amount of flooded areas than 2015. In the quarterly analysis of results, we found that during the months of July to September, there was a decrease in rainfall, compared to the April-June quarter. The method used was the SVM. We believe that the probabilistic method has to be optimized; it is a good contextual classifier.

Literature cited

- i)F.-O. Tapia-Silva, A.-I. Contreras-Silva, hydrological characterization of the Usumacinta river basin towards the preservation of environmental services . The International Archives of the Photogrammetry, Remote Sensing and Spatial Information Sciences, Volume XL-7/W3, 2015 36th International Symposium on Remote Sensing of Environment, 11–15 May 2015, Berlin, Germany F
- ii)López-Caloca Alejandra, Tapia-Silva, Felipe-Omar, Escalante-Ramirez Boris, Chapala change detection using time series. Remote Sensing for Agriculture, Ecosystems, and Hydrology X. Edited by Neale, Christopher M. U.; Owe, Manfred; D'Urso, Guido. Proceedings of the SPIE, Volume 7104, article i 710405, 11 pp. (2008).
- iii)Rodríguez-Rodríguez E. Las lagunas Continentales de Tabasco, Colección José N. Rovirosa. Biodiversidad, Desarrollo Sustentable y Trópico Húmedo Universidad Juárez Autónoma de Tabasco Villahermosa, Tabasco 2002.
- iv)Rodríguez-Zúñiga M.T., Troche-Souza C., Vázquez-Luque A. D., Márquez-Mendoza J. D., Vázquez Balderas B., Valderrama-Landeros L., Velázquez-Salazar S., Uribe Martínez A., Acosta-Velázquez J., Díaz Gallegos J., Cruz-López M. I. y Resal R. 2012. Los manglares de México: estado actual y establecimiento de un programa de monitoreo a largo plazo: 2ª y 3era etapas. Documento Nacional para el Conocimiento y Uso de la Biodiversidad. Informe final SNIB-CONABIO proyecto No. G0004. México, D.F.
- v) <https://sentinel.esa.int/web/sentinel/toolbarboxes/sentinel-1-tutorials>
- vi) https://sentinel.esa.int/documents/247904/695163/Sentinel-1_User_Handbook

Acknowledgments

The SAR images, at the basis of the study, were provided by ESA. The authors wish to thank Dr. José Chapela and Elvia Martínez Viveros, for the institutional and academic support provided for this work, and Evelyn Aron, for the technical revisions to the article.

