



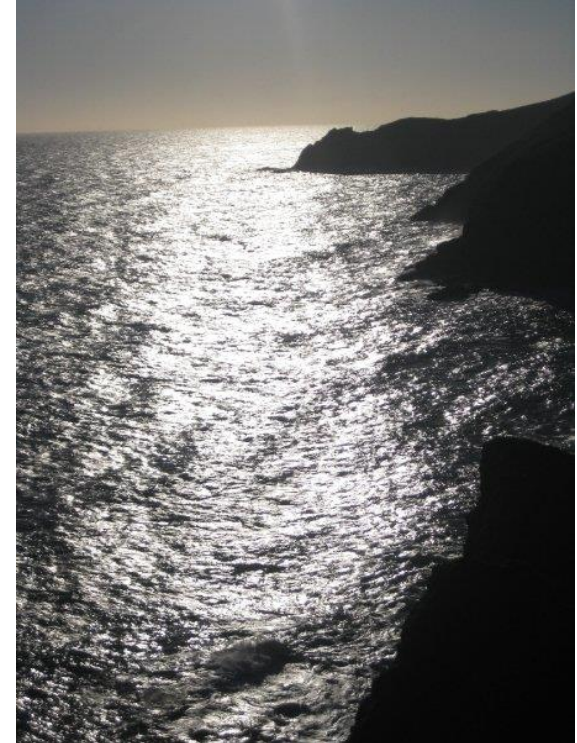
SAFI: Supporting our Aquaculture & Fisheries Industries

Dr Antoine Mangin

06 April 2016, Huelva – User's Board meeting # 3



- Many scientific studies on dynamics of marine ecosystems using Earth Observation (EO)
- However, lack of operational tools and products incorporating EO data



The project objectives are to develop tools & services in order:

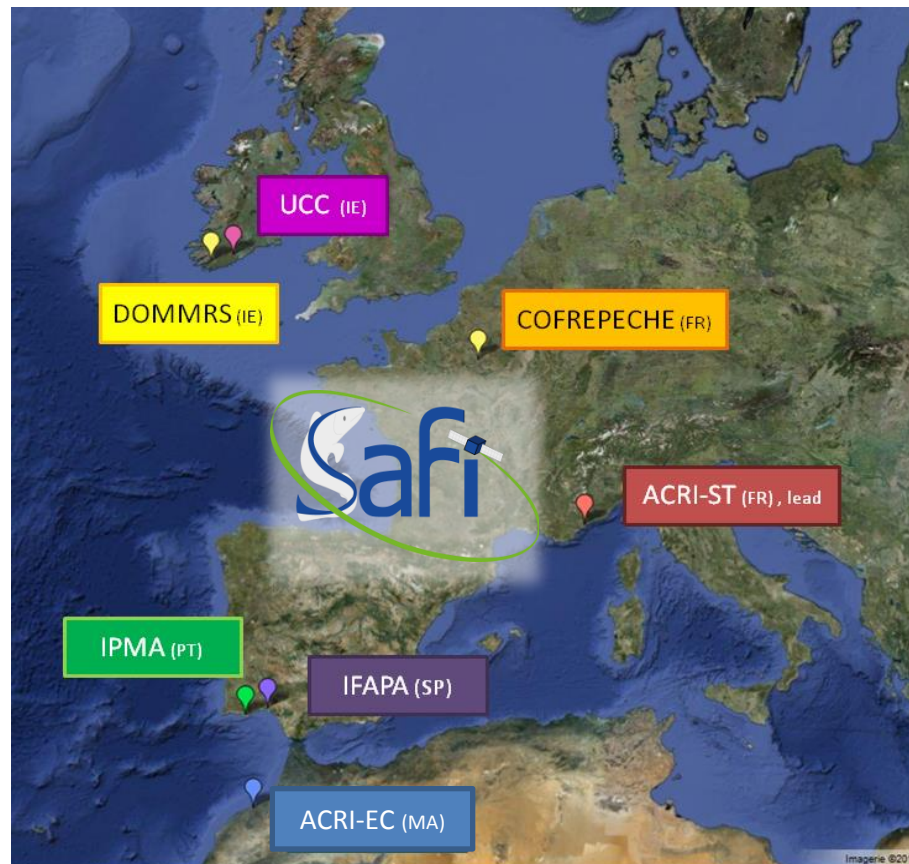
- to assist aquaculture deployment and environmental monitoring during operations
- to support fisheries by providing indicators of recruitments, abundances and shell/fish locations



How will this is achieved?

- Combine satellite Earth Observation data (EO) (e.g. SENTINEL-2,3) with in-situ data for indicator development – especially taking advantage of the large EU-COPERNICUS programme
- Setup a network of SMEs with complementary skills to develop service
- Evaluate acceptance, sustainability and exportability of service





European Commission





Transfer of expertise/knowhow

Expertise level in Earth Observation



Final users of SAFI

Expertise level in Aquaculture and Fishery

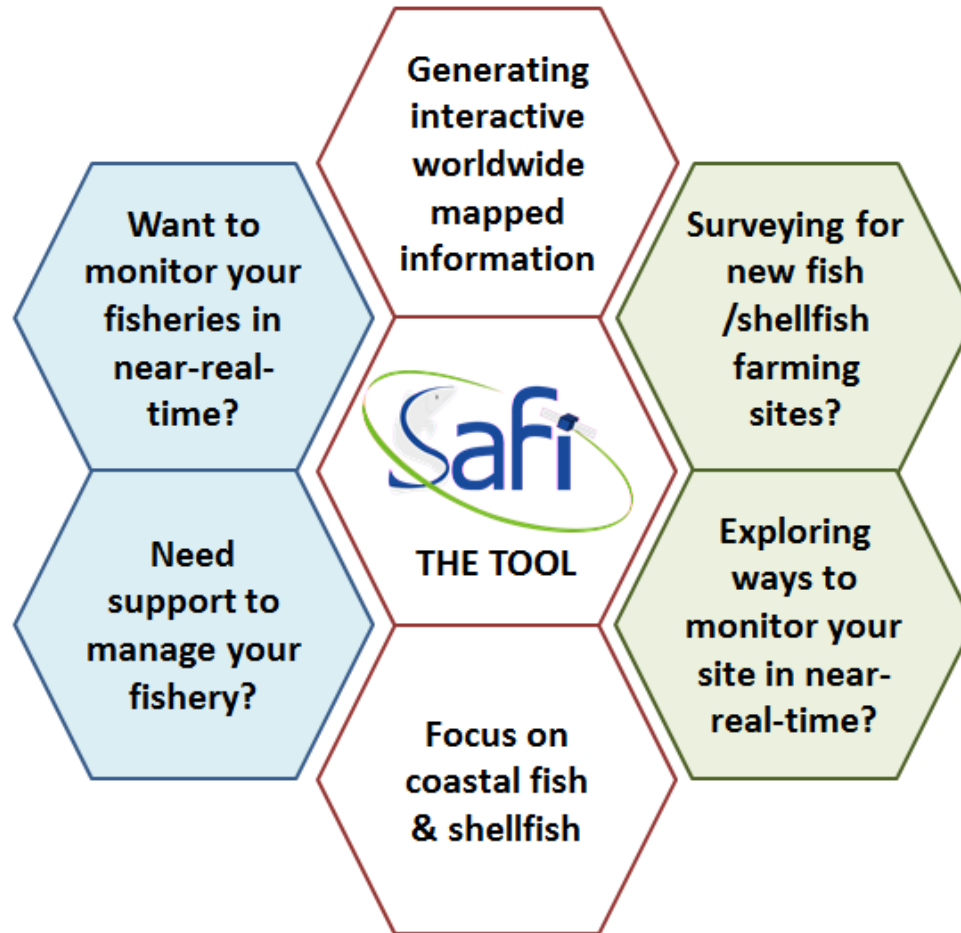


European Commission



Engaged in fisheries?

Engaged in aquaculture?



The  « honeycomb »



SAFI is relying on large user consultation



The  's users tour

- Cork 2014 (10)
- Paris 2014 (4)
- Olhão 2015 (10)
- Sophia Antipolis 2015 (6)
- Huelva 2016 (9)

For consolidation of



products &



tools &

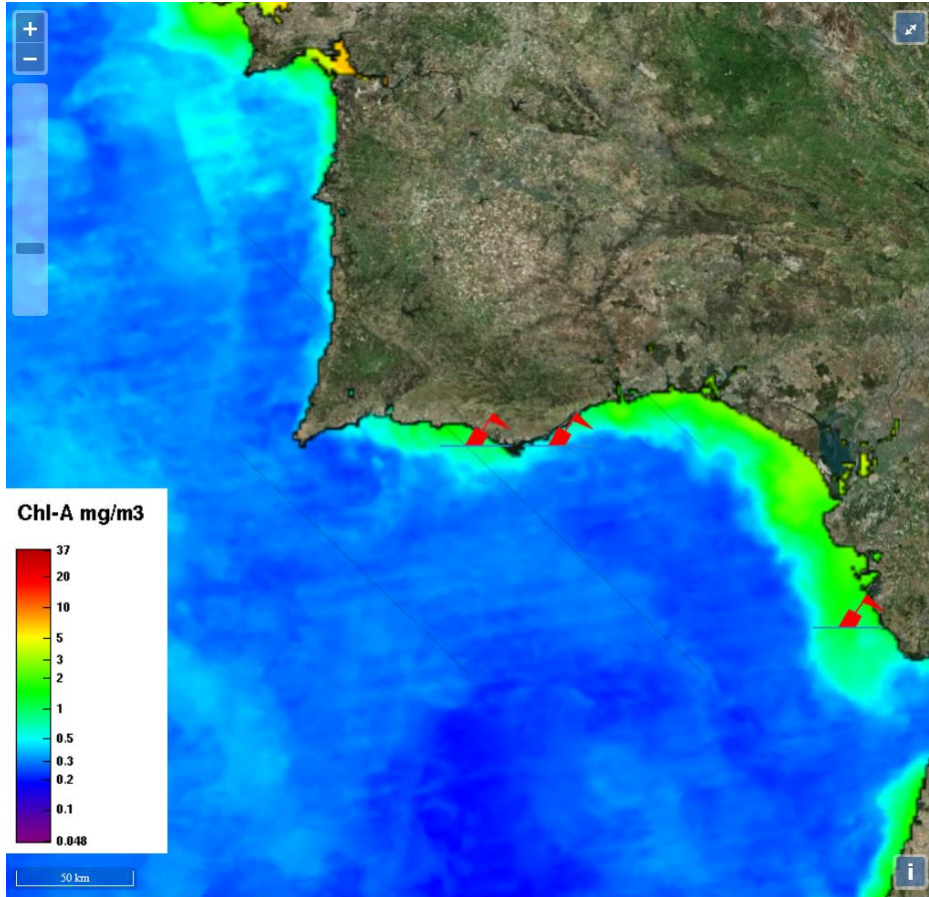


services



European
Commission

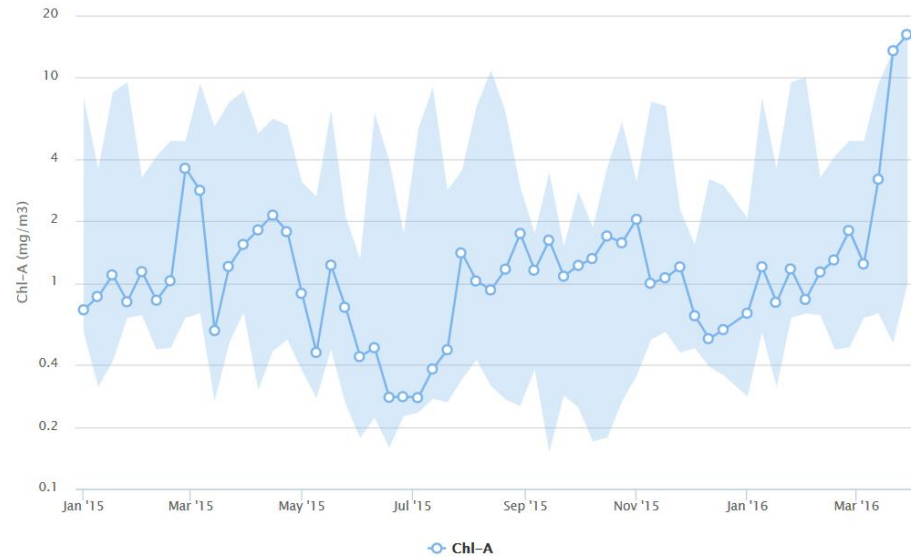




Chl-A

Download data from plot

Chl-A at Faro



SAFI is a FP7 project funded by the European Commission. The views and opinions expressed in this publication are the sole responsibility of the authors and do not necessarily reflect the views of the European Commission.

Highcharts.com



New functionalities :

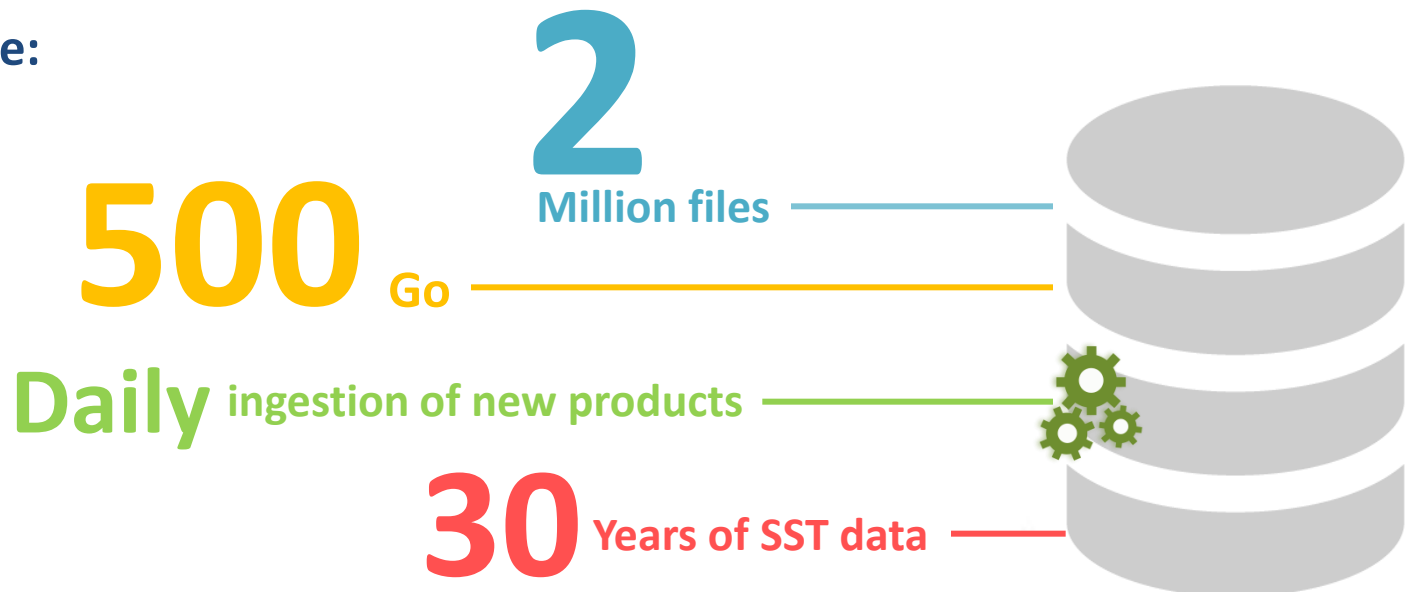
- **Catalogue search within the SAFI archives**

Near-real time or long-term archive data.

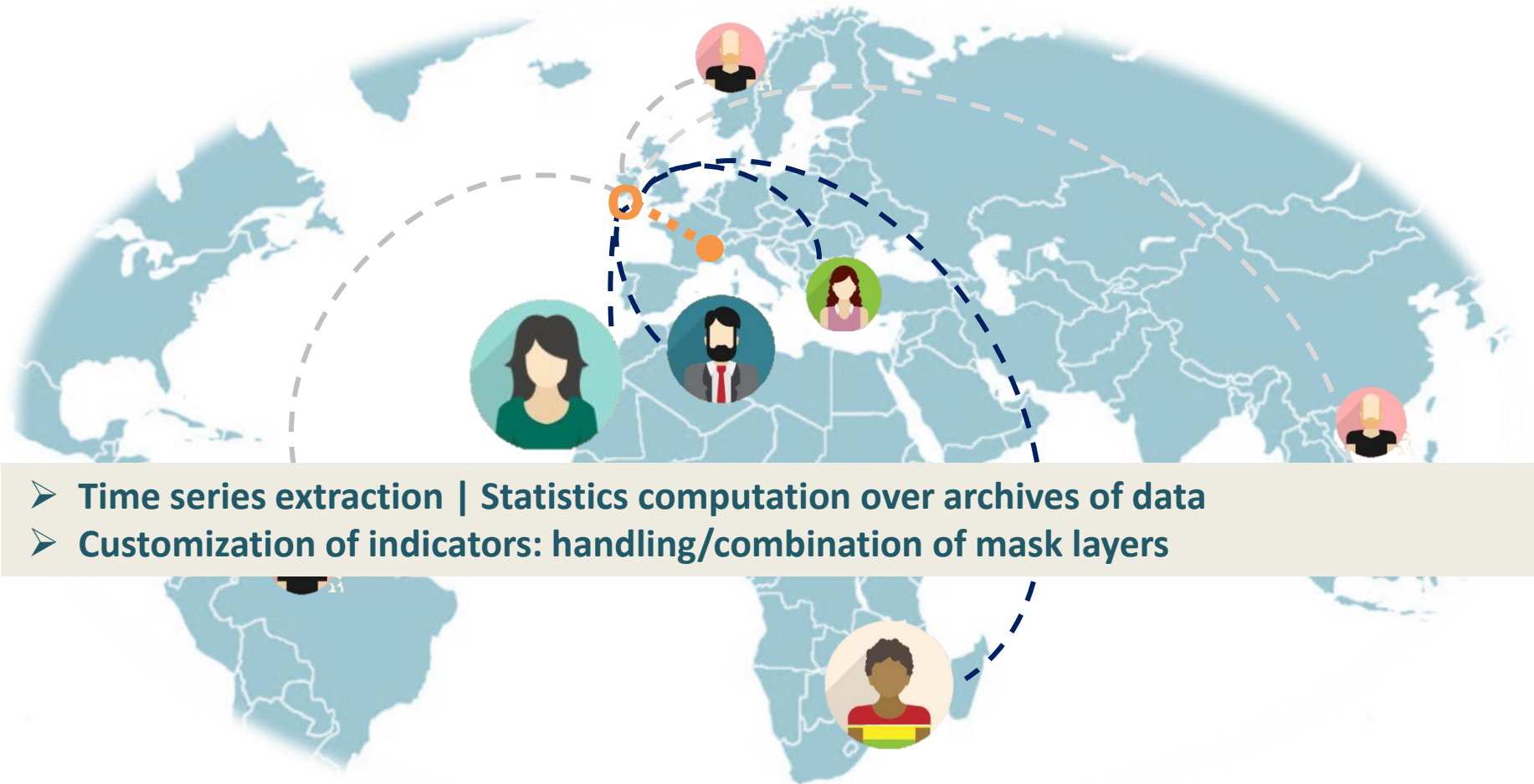
Daily ingestion of new products (from SAFI homemade & external databases).

Search available for near-real time data. Will be completed for full archive.

SAFI Database:

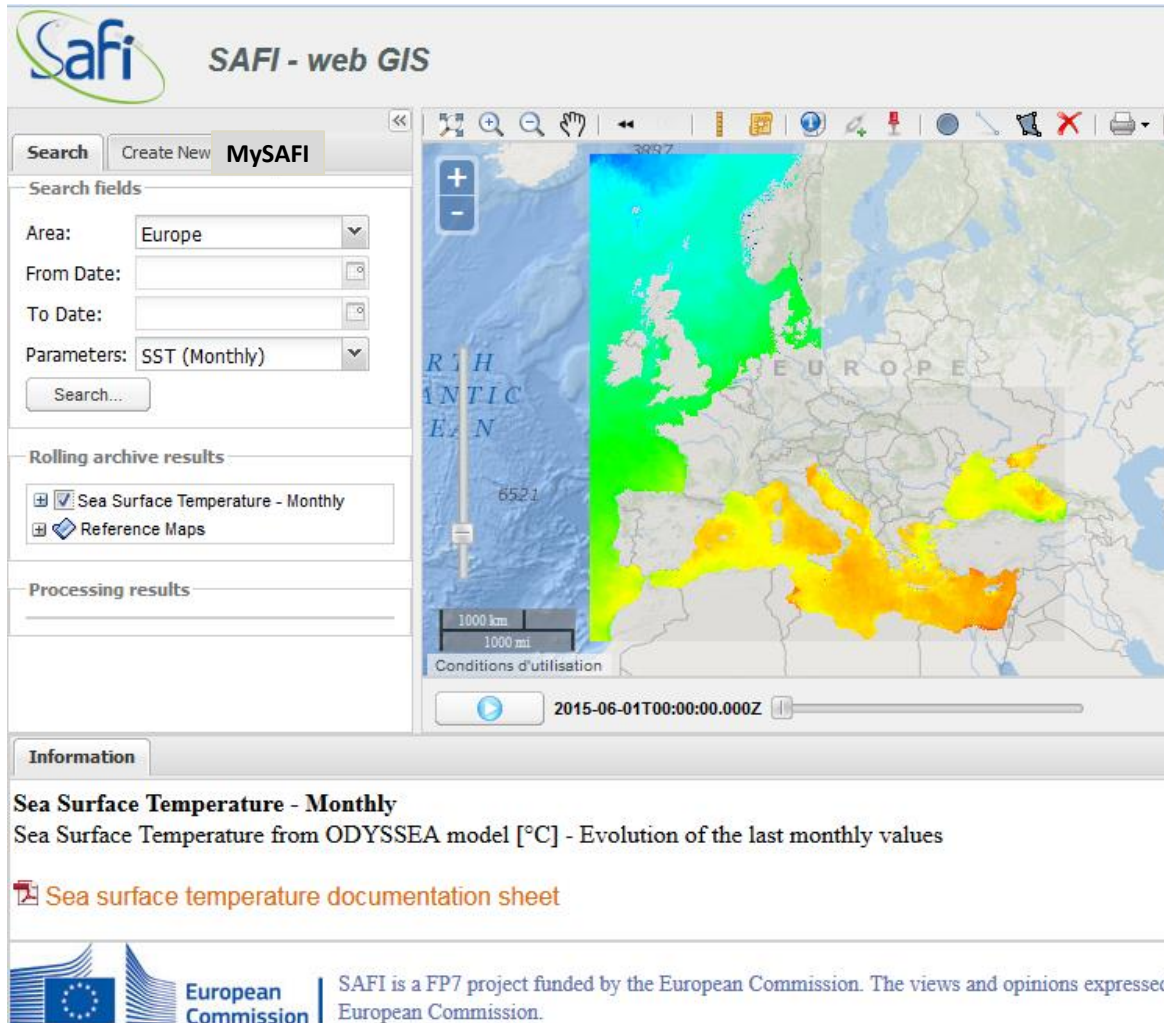


Remote processing ordering from wherever through internet:



- Time series extraction | Statistics computation over archives of data
- Customization of indicators: handling/combination of mask layers

Scope of the SAFI pro tool



SAFI - web GIS

Search Create New **MySAFI**

Search fields

Area: Europe

From Date:

To Date:

Parameters: SST (Monthly)

Search...

Rolling archive results

- Sea Surface Temperature - Monthly
- Reference Maps

Processing results

Information

Sea Surface Temperature - Monthly
Sea Surface Temperature from ODYSSEA model [°C] - Evolution of the last monthly values

[Sea surface temperature documentation sheet](#)

European Commission | SAFI is a FP7 project funded by the European Commission. The views and opinions expressed in this document are those of the European Commission.

- » **Search catalogue** for visualisation
- » **Create new layer**, processing the archive of data